

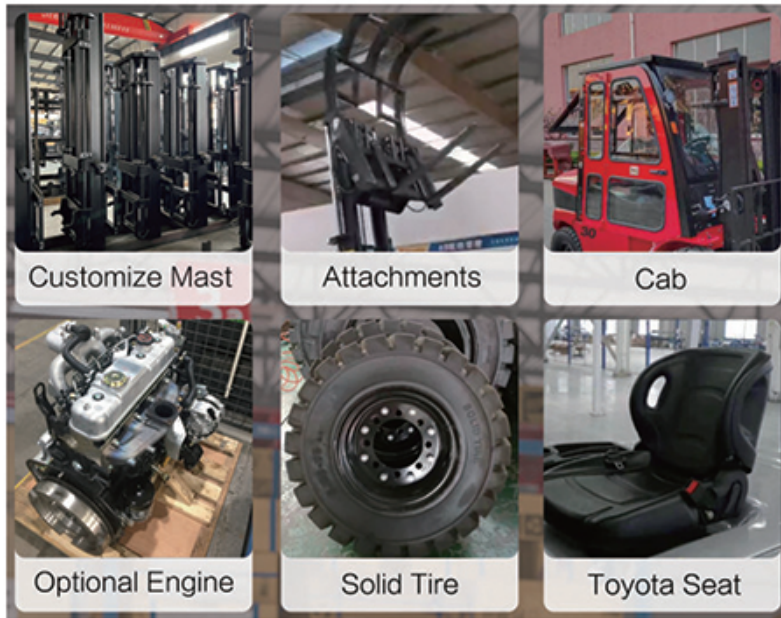
CPCQD20 — CPCQD100

LPG FORKLIFTS

PRODUCT DESCRIPTION:

©With its versatility, our LPG forklift is suitable for a wide range of applications, including warehouses, manufacturing facilities, construction sites, and distribution centers.

Our LPG forklift boasts a robust engine that delivers impressive power, allowing for efficient handling of heavy loads and enhanced productivity.



ADVANTAGES:

- ©Adjustable seats, and small diameter steering wheel. suitable for different drivers.
- © Short wheelbase design, large corer steering axle, front and rear wheels standard with solid tires, effectively reduce the turning radius.
- ©Ovemead guard heightening design. the roof with high-strength steel plate stamping. The height can meet the requirements of European and American customers.
- © All standard with LED lamps energy efficient longer service life.
- ©World famous brand engine meet EPA Tier4 Fina standard.
- © Enhanced Safety Features: Safety is a top priority, and our LPG forklift is equipped with advanced safety features such as stability systems, ergonomic controls, and enhanced visibility, ensuring a safe working environment.
- © Durability and Reliability: Built with high-quality materials and components, our LPG forklift offers exceptional durability and reliability, capable of withstanding demanding work conditions and providing long-lasting performance.

MODEL TYPE	Unit	CPCQD20	CPCQD25	CPCQD30	CPCQD35
POWER TYPE	/	GASOLINE/LPG	GASOLINE/LPG	GASOLINE/LPG	GASOLINE/LPG
RATED CAPACITY	kg	2000	2500	3000	3500
LOAD CENTER	mm	500	500	500	500
OPERATOR TYPE	/	SEATED	SEATED	SEATED	SEATED
TYRE TYPE FRONT/REAR	/	PNEUMATIC	PNEUMATIC	PNEUMATIC	PNEUMATIC
LIFTING HEIGHT	mm	3000	3000	3000	3000
FORK SIZE LXWXT	mm	1070X122X40	1070X122X40	1070X125X25	1070X130X45
MAST TILT RANGE F/R	/	6/12	6/12	6/12	6/12
OVERALL LENGTH(WITHOUT FORK)	mm	2513	2583	2698	2725
OVERALL WIDTH	mm	1150	1150	1225	1225
MAST LOWERED HEIGHT	mm	1995	1995	2070	2160
MAST EXTENDED HEIGHT	mm	4030	4030	4250	3290
OVERHEAD GUARD HEIGHT	mm	2070	2070	2090	2090
TURNING RADIUS(OUTSIDE)	mm	2365	2365	2400	2450
FORK OVERHANG(W HEEL CENTER TO FORK FACE)	mm	483	483	498	498
MIN.RIGHT ANGLE STACKING AISLE WIDTH	mm	2075	2075	2145	2160
WHEELBASE	mm	1600	1600	1700	1700
TRADE FRONT	mm	970	970	1000	1000
REAR	mm	970	970	970	970
GROUND LOWEST	mm	110	110	135	145
CLEARANCE WHEEL BASE CENTER	mm	115	115	140	140
SPEED TRAVEL FULL LOAD	km/h	17	17	18	18
NO LOAD	km/h	19.5	19.5	19.5	19.5
LIFTING FULL LOAD	mm/s	570	570	450	380
NO LOAD	mm/s	600	600	500	450
MAX. DRAWBAR PULL FULL LOAD/NO LOAD	kn	17/15	17/15	19/17	19/17
MAX.GRADEABILITY FULL LOAD	%	20	20	20	20
SELF WEIGHT	kg	3320	3680	4280	4750
TYRES SPEC FRONT	/	7.00-12-12PR	7.00-12-12PR	28*9-15-12PR	28*9-15-12PR
SPECE	/	6.00-9-1 OPR	6.00-9-1 OPR	6.50-10-1 OPR	6.50-10-1 OPR
BRAKE TYPE DRIVING BRAKE	/	HYDRAULIC	HYDRAULIC	HYDRAULIC	HYDRAULIC
PARKING BRAKE	/	MECHANICAL HAND BRAKE	MECHANICAL HAND BRAKE	MECHANICAL HAND BRAKE	MECHANICAL HAND BRAKE
BATTERY VOLTAGE/CAPACITY	V/Ah	12/60	12/60	12/90	12/90
TRANSMISSION MODEL TYPE	/	POWERSHIFT (MANUAL)	POWERSHIFT (MANUAL)	POWERSHIFT (MANUAL)	POWERSHIFT (MANUAL)
STAGE FWD/RVS	/	1/1 (2/2)	1/1 (2/2)	1/1 (2/2)	1/1 (2/2)
OPERATING PRESSURE	Mpa	17.5	17.5	17.5	17.5



CPCQD20 — CPCQD100

LPG FORKLIFTS

35



Comfort and Support ORS* Seat



The ORS seat can be adjusted 150 mm forward and backward to provide comfort and support to almost all sizes of operators.
*ORS: Operator Restraint System

Wide Floor Space



The spacious floor area enables a more relaxed operating position that contributes to comfort.

Outstanding Visibility



The overhead guard, mast and instrument panel have been designed to provide excellent visibility of the fork tips at the most frequently used lift heights.



Operator-Friendly Steering Wheel



The small-diameter steering wheel teams up with the full hydraulic power steering system to provide excellent maneuverability. The steering column offers step-less adjustment to accommodate a wide range of operator preferences.



Brake Fluid

Simply lift up the cover on the panel to check the brake fluid.



Hood Latch

The easy-to-operate latch provides quick access to the engine compartment.

Model type	UNIT	CPQD60	CPCQD70	CPCQD80	CPCQD100
Power Type	/	Gasoline/LPG	Gasoline/LPG	Gasoline/LPG	Gasoline/LPG
Rated capacity	kg	6000	7000	8000	10000
Load center	mm	600	600	600	600
Operator type	/	Seated	Seated	Seated	Seated
Tyre type Front/Rear	/	Pneumatic	Pneumatic	Pneumatic	Pneumatic
Lifting height	mm	3000	3000	3000	3000
Fork size LxWxT	mm	1220X150X65	1220X150X75	1220X175X80	1220X175X80
Mast tilt range F/R	/	6/12	6/12	6/12	6/12
Overall Length(Without fork)	mm	3520	3600	4160	4260
Overall width	mm	1995	1995	2165	2165
Mast lowered height	mm	2500	2625	2850	2850
Mast extended height	mm	4420	4420	4085	4085
Overhead guard height	mm	2450	2450	2560	2560
Turning radius(Outside)	mm	3300	3360	3710	3900
Min.right angle stacking aisle width	mm	3000	3040	3320	3550
Wheelbase	mm	2250	2250	2800	2800
Trade Front	mm	1470	1470	1600	1600
Rear	mm	1700	1700	1700	1700
Ground clearance	mm	190	190	245	245
Speed travel Full load	km/h	22	22	26	28
No load	km/h	20	20	28	30
lifting Full load	mm/s	400	330	360	310
No load	mm/s	460	390	410	370
Max. Drawbar Pull Full load/No load	kn	54	53	57	58
Max.Gradeability Full load	%	28	24	<=20	<=20
Self weight	kg	8640	9350	11200	12510
Tyres specFront	/	8.25-15-14PR	8.25-15-14PR	9-20-14PR	9-20-14PR
Spece	/	8.25-15-14PR	8.25-15-14PR	9-20-14PR	9-20-14PR
Brake typeDriving brake	/	Hydraulic	Hydraulic	Hydraulic	Hydraulic
Battery Voltage/Capacity	V/Ah	24/90	24/90	24/90	24/90
Transmission Model type	/	Powershift (Manual)	Powershift (Manual)	Powershift (Manual)	Powershift (Manual)
Stage FWD/RVS	/	2/2	2/2	2/2	2/2
operating pressure	Mpa	17	17	19.5	19.5